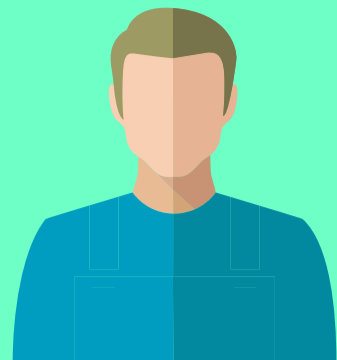


HOW MES WORKS?



Customer places an order via Call, Email or E-Commerce Platform



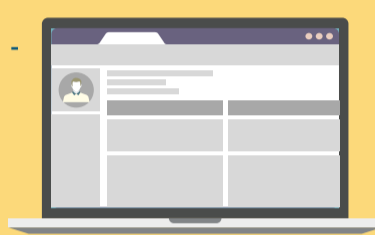
The order is manually entered by an operator in case of call or automatically reflected (email or e-commerce platform)

If the Product is in Stock

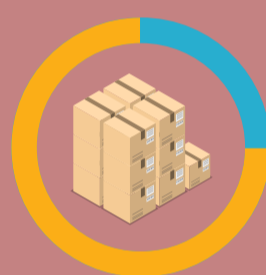


ERP initiates procurement from the Warehouse

Packing slip is generated, product is shipped to the customer



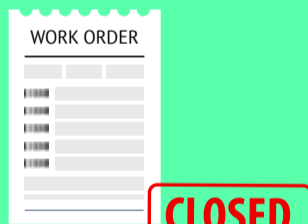
The shipment details are sent to the online shopping platform which in turn makes it visible to the customer.



ERP updates Inventory Levels & Work Order with relevant details after each production phase till WO is closed



The shipment details are sent to the online shopping platform which in turn makes it visible to the customer.



REAL TIME PRODUCTION UPDATE FOR IMPROVED MES



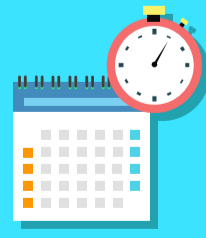
- ▶ Setup Start & End Time
- ▶ Job Start & End Time
- ▶ Idle Time



Operator alert in case of machine breakdown between a job operation or other factors

Machine Control device connected to each machine tracks various machine parameters and alerts the operator in case of any deviation.

Operators have an option to record production data on their consoles that directly gets updated in the ERP.



- ▶ View production data on the shop-floor in real time.
- ▶ Daily, Weekly, Monthly and Yearly data from summary to transaction level.
- ▶ Analytical dashboards for in depth analysis by supervisors



- ▶ Get yield quality through in-process Quality Controls.
- ▶ % age of Produced Goods | Needs Rework | To be Scrapped
- ▶ Cause of Low Yields for immediate rectification.



- ▶ Track raw materials, semi-finished goods & final shipment with the help of bar codes.
- ▶ Quickly recall products & trace defect to the correct batch of raw materials & semi-finished parts.