

What Data does an ERP help Track from Order to Delivery?



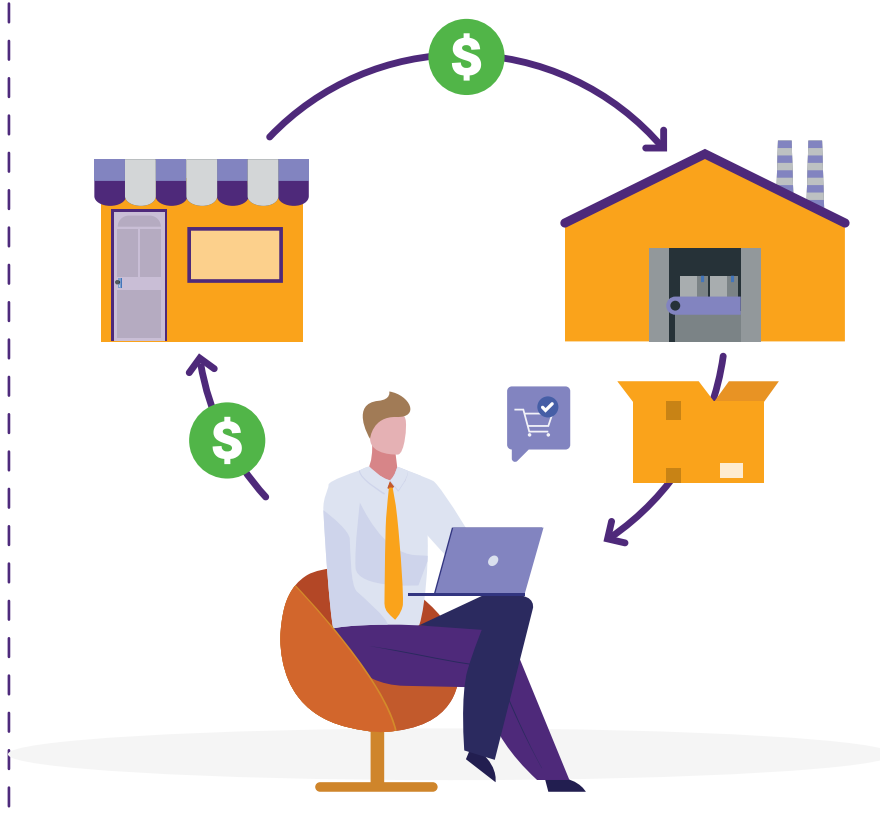
Sales



- ▶ Track RFQs, proposals, response to RFQs (quotes & estimates), and sales conversions
- ▶ Track sales order information such as sales order number, customer info, delivery due date etc.
- ▶ Track sales performance i.e. revenue, profit margins, average order value, sales growth, sales by category & geography.
- ▶ Generate sales forecast numbers based on tracked sales info.
- ▶ Track sales leads, customer interactions and overall conversions.
- ▶ Monitor sales order status, shipping and delivery info, and customer feedback.
- ▶ Track sales tax numbers, and compliance obligations.

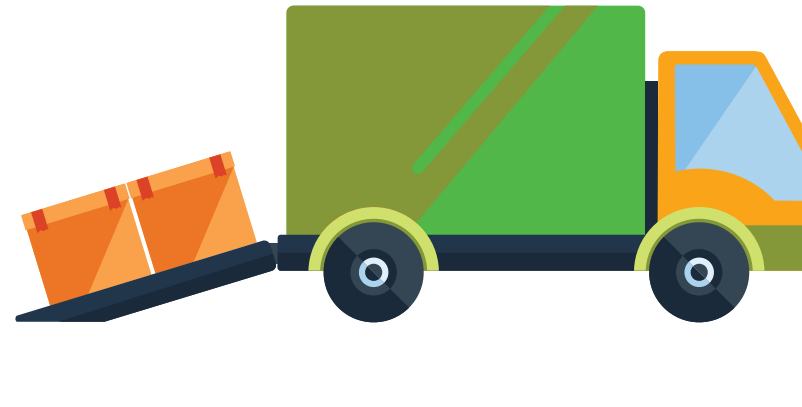
Inventory

- ▶ Track real-time inventory levels across multiple locations.
- ▶ Track inventory movements such as goods receipt, material issues, warehouse transfers, and returns.
- ▶ Maintain and track master inventory list with details such as SKUs, item description, UoM, dimensions, weight, costs and supplier data.
- ▶ Calculate and track inventory valuation costs from procurement till production.
- ▶ Trace materials and products throughout the supply chain for quick recalls and returns.



Inventory

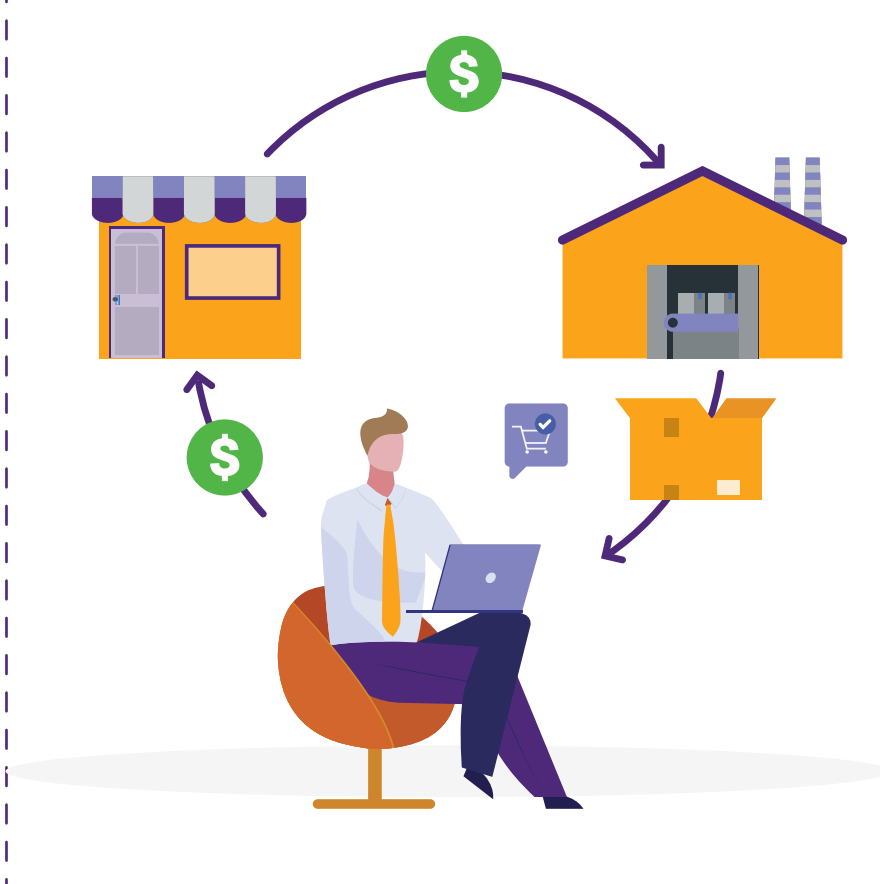
Purchasing



- ▶ Track purchase orders, approvals and delivery status.
- ▶ Track supplier data that includes contact info, performance history, product info and pricing details.
- ▶ Track supplier performance based on product quality, turnaround time, delivery times and compliance to contracts.
- ▶ Track order accuracy, supplier lead times and inventory turnover.
- ▶ Post goods receipt, track quantity, product quality, and damaged or missing goods as per the purchase invoice.

Planning & Scheduling

- ▶ Track existing inventory of raw materials, spare parts, tools, and fixtures.
- ▶ Track procurement orders of materials, shipment and supplier lead time.
- ▶ Track availability of manpower, machines, and work center capacity.
- ▶ Track each production order and compare scheduled vs. actual production timelines.
- ▶ Track setup and processing time for each machine, and operation start and end times.
- ▶ Track allocation of labor and machines for each job.



Planning & Scheduling

Shop Floor Operations



- ▶ Track work order status in real-time i.e., planned, in-progress, completed and emergency work orders.
- ▶ Track scheduled start and end times vs. actual time.
- ▶ Track current and completion status of production for each job or item.
- ▶ Track real-time status of machines i.e., idle, breakdown and running.
- ▶ Track machine utilization rates, downtime and overall performance.
- ▶ Track employee productivity in the form of hours worked, over-time, and output per employee.
- ▶ Track quantity of material consumed, scrap quantity, material movement, real-time levels of raw materials, in-progress and finished goods.
- ▶ Track product yield rate, scrap rates, product rework, and Overall Equipment Effectiveness (OEE).

Quality

- ▶ Track quality defects, defect classification, defect frequency, location and cause analysis.
- ▶ Track non-conformance parameters such as, description, personnel who detected, time stamp, and impacted batches/lots.
- ▶ Track corrective and preventive actions for each non-conformance, implementation plan and status.
- ▶ Track supplier performance, quality audits, supplier non-conformance and corrective actions.
- ▶ Track Cost of Quality (CoQ).
- ▶ Track product return and recall rates due to quality issues.



Quality

Shipping & Logistics



- ▶ Track shipment via tracking numbers of various shipping service providers.
- ▶ Track shipment costs that include freight charges and associated taxes.
- ▶ Maintain a master list of shipping carriers, contact and address details, performance data and past history.
- ▶ Track on-time delivery, product damage rates and service reliability.
- ▶ Track service agreement SLAs, contract end and renewal dates.
- ▶ Track estimated vs. actual shipment time.
- ▶ Track goods received and goods dispatched from each warehouse.
- ▶ Track picking and packing efficiency.
- ▶ Monitor shipment compliance with relevant regulations.
- ▶ Track custom duty costs and taxes for global shipments.
- ▶ Track delivery rates i.e., success, delayed or failed deliveries to customers.
- ▶ Track return goods shipments.

Accounting & Finances

- ▶ Track every recorded transaction from summary to transaction-level.
- ▶ Track and maintain invoices from vendors, scheduled payments, and successful payments under accounts payables.
- ▶ Track and maintain customer invoices, received payments under accounts receivables.
- ▶ Track and manage fixed assets from acquisition to disposal.
- ▶ Track asset maintenance schedules, compliance status and depreciation numbers.
- ▶ Track machine assets including service and maintenance schedules.
- ▶ Track maintenance records for each fixed asset and build maintenance schedules.
- ▶ Track overall financial health with balance sheets, income statements, cash flow statements and custom reports.
- ▶ Create, track, and adjust financial budgets based on real-time financial data.
- ▶ Track key financial metrics and KPIs to maintain optimum financial health.
- ▶ Track all projects costs and consolidate into a project ledger.
- ▶ Track and record revenue when they are recognized or earned.
- ▶ Track actual costs in real-time across all manufacturing and material procurement stages.
- ▶ Track detailed breakdown for material, overhead, labor, and outside process costs.



Accounting & Finances

With OmegaCube ERP's powerful tracking features, manufacturers can get a real-time view of their day-to-day operations and track key parameters. From the shop floor to the top floor, everyone has data at their fingertips enabling them to make the right decisions and improve overall productivity and profitability.

Contact us for a detailed demo on **OmegaCube ERP for Manufacturing and Distribution Enterprises**